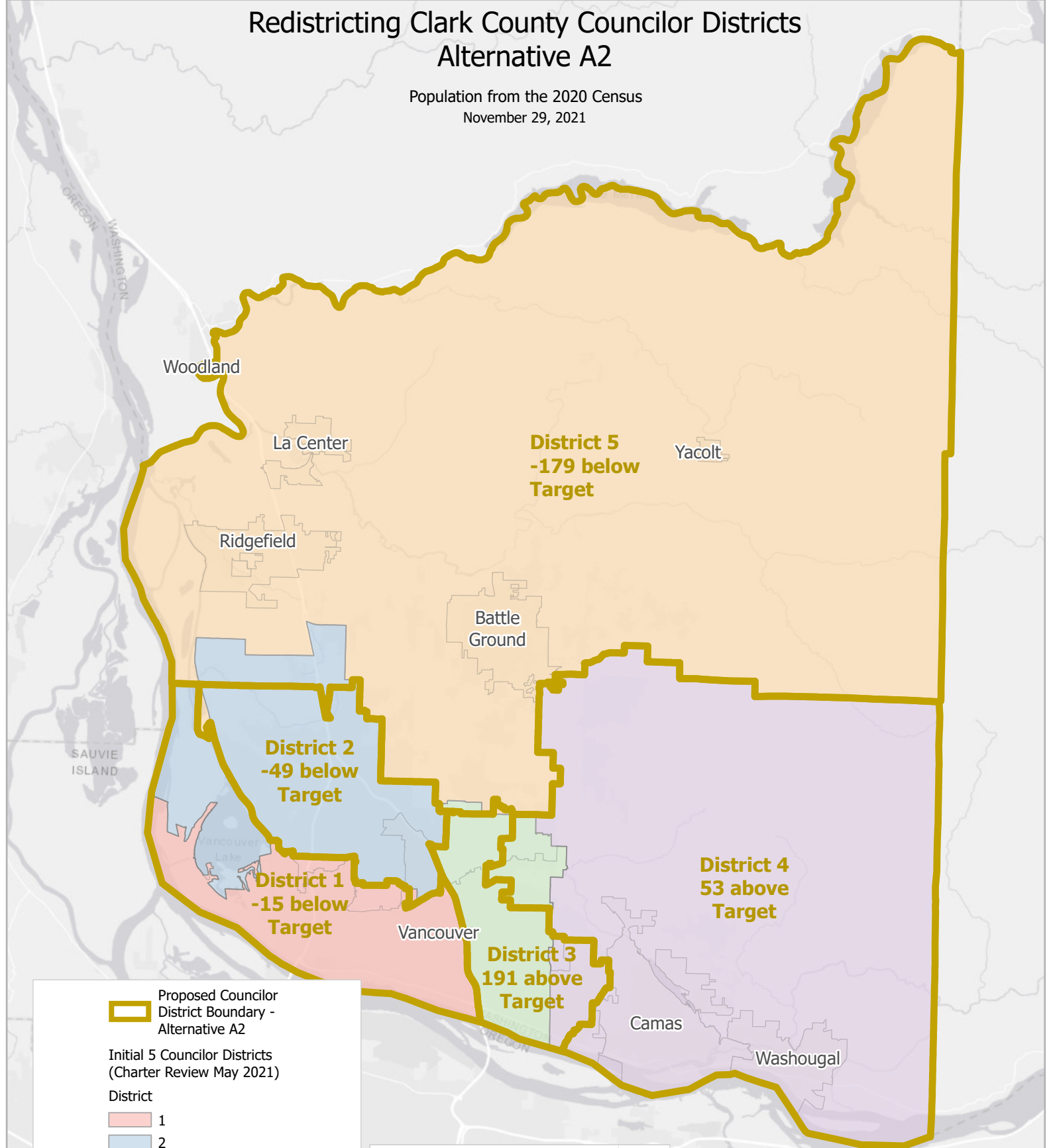



Redistricting Clark County Councilor Districts Alternative A2





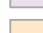
Population from the 2020 Census
November 29, 2021



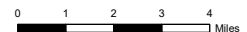
 Proposed Councilor District Boundary - Alternative A2

Initial 5 Councilor Districts (Charter Review May 2021)

District

-  1
-  2
-  3
-  4
-  5

NOTE: Information shown on this map was collected from several sources. Clark County accepts no responsibility for any inaccuracies that may be present.



Geographic Compactness Scores (Alt A2)		
Polsby Popper Test - A higher score is more compact		
Grofman Test - A lower score is more compact		
District	Polsby Popper	Grofman
1	0.344	6.044
2	0.373	5.808
3	0.329	6.184
4	0.489	5.069
5	0.361	5.901
Total	1.895	29.006
Average	0.379	5.801

Alternative A2			
District	Population	Target Population	Deviation from Target
1	100,647	100,662	-15
2	100,613	100,662	-49
3	100,853	100,662	191
4	100,715	100,662	53
5	100,483	100,662	-179
Deviation Total			487